



Simply Better Connections

UC485

USB to RS-422/485 Adapter
User Manual

Compliance Statements

FEDERAL COMMUNICATIONS COMMISSION INTERFERENCE STATEMENT

This equipment has been tested and found to comply with the limits for a Class A digital device, pursuant to Part 15 of the FCC Rules. These limits are designed to provide reasonable protection against harmful interference when the equipment is operated in a commercial environment. This equipment generates, uses, and can radiate radio frequency energy and, if not installed and used in accordance with the instruction manual, may cause harmful interference to radio communications. Operation of this equipment in a residential area is likely to cause harmful interference in which case the user will be required to correct the interference at his own expense.

The device complies with Part 15 of the FCC Rules. Operation is subject to the following two conditions: (1) this device may not cause harmful interference, and (2) this device must accept any interference received, including interference that may cause undesired operation.

FCC Caution

Any changes or modifications not expressly approved by the party responsible for compliance could void the user's authority to operate this equipment.

Warning

Operation of this equipment in a residential environment could cause radio interference.

Achtung

Der Gebrauch dieses Geräts in Wohnumgebung kann Funkstörungen verursachen.



KCC Statement

유선 제품용 / A 급 기기 (업무용 방송 통신 기기)
이 기기는 업무용 (A 급) 전자파적합기기로서 판매자 또는 사용자는 이
점을 주의하시기 바라며, 가정 외의 지역에서 사용하는 것을 목적으로
합니다.

Industry Canada Statement

This Class A digital apparatus complies with Canadian ICES-003.

CAN ICES-003 (A) / NMB-003 (A)

RoHS

This product is RoHS compliant.

手持式裝置 USB 類產品

設備名稱 Equipment Name	USB 轉 RS-422/485 轉換器			型號 (型式) Type designa- tion (Type)	UC485	
單元 Unit	限用物質及其化學符號 Restricted substances and its chemical symbols					
	鉛 Lead (Pb)	汞 Mercury (Hg)	鎘 Cadmium (Cd)	六價鉻 Hexavalent chromium (Cr ⁺⁶)	多溴聯苯 Polybrominated biphenyls (PBB)	多溴二苯醚 Polybrominated diphenyl ethers (PBDE)
電纜線 Cable	—	○	○	○	○	○
印刷電路部件 PCBA	—	○	○	○	○	○
塑膠 / 其他部件 Plastic / Other parts	○	○	○	○	○	○
金屬部件 Metal parts	—	○	○	○	○	○

備考 1. “超出 0.1 wt %” 及 “超出 0.01 wt %” 係指限用物質之百分比含量超出百分比含量基準值。

Note 1: “Exceeding 0.1 wt %” and “exceeding 0.01 wt %” indicate that the percentage content of the restricted substance exceeds the reference percentage value of presence condition.

備考 2. “○” 係指該項限用物質之百分比含量未超出百分比含量基準值。

Note 2: “○” indicates that the percentage content of the restricted substance does not exceed the percentage of reference value of presence.

備考 3. “—” 係指該項限用物質為排除項目。

Note 3: “—” indicates that the restricted substance corresponds to the exemption.

製造商：宏正自動科技股份有限公司

地址：新北市汐止區大同路二段 125 號三樓

警告：為避免電磁干擾，本產品不應安裝或使用於住宅環境。

UC485 User Manual

Online Registration

International	http://eservice.aten.com
---------------	---

Telephone Support

For telephone support, call this number:

International	886-2-8692-6959
China	86-400-810-0-810
Japan	81-3-5615-5811
Korea	82-2-467-6789
North America	1-888-999-ATEN ext 4988 1-949-428-1111

Technical Support

- ◆ For international online technical support – including troubleshooting, documentation, and software updates:
<http://eservice.aten.com>
- ◆ For North American technical support:

Email Support		support@aten-usa.com
Online Technical Support	Troubleshooting Documentation Software Updates	http://support.aten.com
Telephone Support		1-888-999-ATEN ext 4998

Package Contents

Check to make sure that all the components are in working order. If you encounter any problem, please contact your dealer.

The UC485 USB to RS-422/485 Adapter package contains the following items:

- ◆ 1 UC485 USB to RS-422/485 Adapter
- ◆ 1 Terminal Adapter
- ◆ 1 User Instructions

Note:

- ◆ Read this manual thoroughly and follow the installation and operation procedures carefully to prevent any damage to the unit or any connected devices.
- ◆ The product may be updated, with features and functions added, improved or removed since the release of this manual. For an up-to-date user manual, visit

<http://www.aten.com/global/en/>

Overview

The ATEN UC485 USB to RS-422/485 Adapter is a high quality industrial adapter cable designed to instantly add an RS-422 / RS-485 port to your PC or laptop via a USB port. The adapter is powered via the USB connection, therefore an external power supply is not needed.

The UC485 adapter lets you use a single USB connection to create plug-and-play serial transfers without additional cables or complicated device installations. It lets you connect any RS-485 or RS-422 device to your computer's USB port without experiencing computer lock-ups, I/O or driver problems. It is the ideal solution for connecting industrial devices such as laboratory machines, measuring equipment, automated systems, monitoring devices, and many more – where mission-critical applications are required.

Features

- ◆ Converts a USB port to a Legacy COM port
- ◆ DB-9 female to terminal block adapter for easy wiring
- ◆ Fast COM Port Transmission – up to 921.6 Kbps per serial port
- ◆ Windows Vista, 7, 8, 8.1, 10 or above, Mac and Linux
- ◆ LEDs for indicating RS-422 (Orange) or RS-485 (Green)
- ◆ Supports Terminal/ECHO setting by switch
- ◆ Plug-and-Play – no power supply needed
- ◆ Supports USB hot-plugging

System Requirements

Hardware

1 USB enabled computer

Software

- ♦ Windows Vista, 7, 8, 8.1, 10 or above, Mac and Linux

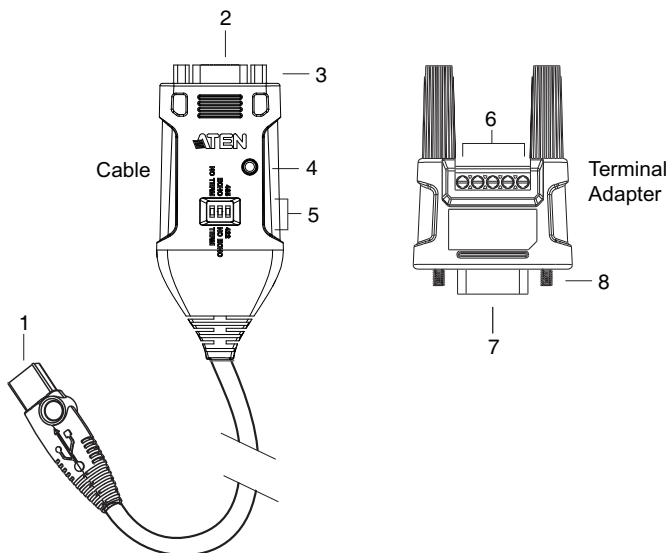
If your Linux kernel is between v2.6.15 ~ v5.4 and your device has a new chipset version, please update the Linux driver from our product web page. This driver works with 2021 or later chipset version device only.

Use the link below to identify which chipset version your device is.

<http://eservice.aten.com/eServiceCx/Common/FAQ/view.do?id=18695>

Components

UC485



No.	Component	Description
1	USB connector	This connector plugs in a USB enabled computer.
2	DB-9 connector	Connect this end of the cable to an RS-422 or RS-485 serial device.
3	connector nut	This nut provides an inlet for the connector screws on the Terminal Adapter (included with this package).
4	power LED	This LED lights Orange (RS-422) or Green (RS-485) to indicate the adapter is connected and powering a device from the computer's USB port.
5	mode selector	These three DIP switches allow you to configure the Terminator, Echo, and device settings.
6	terminal connectors	These five terminal blocks provide a wired connection to the serial device.
7	DB-9 connector (Female)	The terminal adapter plug connects to the cable's DB-9 connector.
8	connector screws	These two screws go into the connector nuts on the cable's DB-9 connector.

Installation



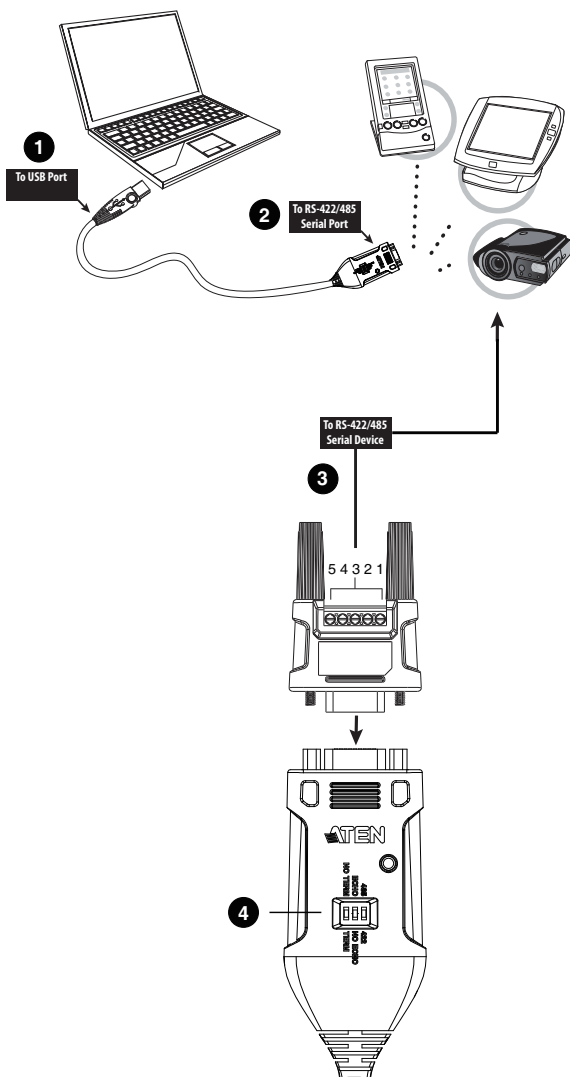
1. Make sure that the power to any device that you connect to the installation has been turned off.
2. Make sure that all devices you will be installing are properly grounded.

Hardware

To setup the UC485, use the diagram on the next page (the numbers in the diagram correspond with the numbered instructions below), and do the following:

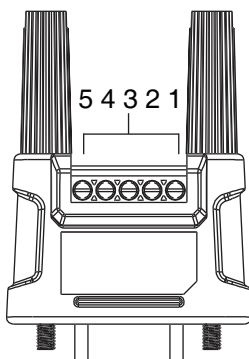
1. Plug the USB connector to the computer and allow the drivers to install.*
2. Plug the DB-9 connector to an RS-422/RS-485 serial device.
3. (Optional) If you are using the terminal connectors, plug the terminal adapter included with this package into the DB-9 connector, secure the connector screws, and then use the terminal blocks to wire a device to the UC485 (SEE PAGE).
4. Use the mode selector to configure the DIP switch settings for the connection type (SEE PAGE).
5. Power on the serial devices.

Note: If you are using an older computer that doesn't contain the drivers for this device, please go to our website to download the UC485 drivers and install them before setting up the hardware.



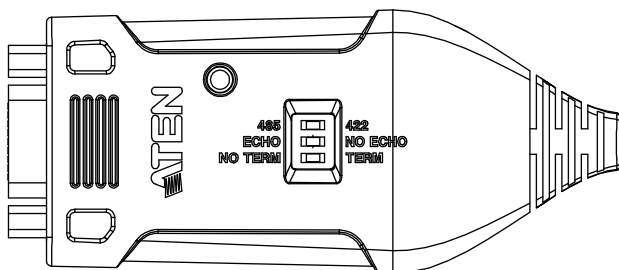
Configuration and Settings

Terminal Block



PIN	RS-422 (4-Wire)	RS-485 (2-Wire)
1	TxD-(A)	Data-(A)
2	TxD+(B)	Data+(B)
3	RxD+(B)	
4	RxD-(A)	
5	GND	GND

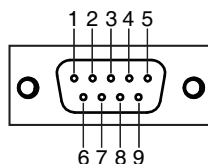
DIP Switch



Switch	Name	Position	Description
1	Term / No Term	No Term (default)	The terminator resistor is disabled.
		Term	The terminator resistor is enabled.
2	Echo / No Echo	Echo	The data transmitted is echoed back.
		No Echo (default)	No data is echoed back.
3	485 / 422	485 (default)	RS-485 2-wire mode
		422	RS-422 4-wire mode

DB9 Pin Assignment

Male DB9



PIN	RS-422 (4-Wire)	RS-485 (2-Wire)
1	TxD-(A)	Data-
2	TxD+(B)	Data+
3	RxD+(B)	
4	RxD-(A)	
5	GND	GND
6	RTS-	
7	RTS+	
8	CTS+	
9	CTS-	

Specifications

Function	UC485
Device Connections	1
Connectors	
Serial Port	1 x DB-9 Male (Silver)
USB Port	1 x USB Type-A Male (White)
Cable Length	1.2 m
LED	
Power Status	RS-422 (Orange) / RS-485 (Green)
Interface	
RS-485	Baud Rate: 75bps~921.6 Kbps
Flow Control	
RTS/CTS, XON/XOFF	Stop Bit: 1, 1.5, 2
FIFO	
64 Bytes	Parity: Even, Odd, None, Mark, Space
Power	Bus Powered
Environmental	
Operating Temperature	0–40° C
Storage Temperature	-20–60° C
Humidity	0–80% RH, Non-condensing
Physical Properties	
Housing	Plastic
Weight	0.09 kg (0.20 lb)
Dimensions (L x W x H)	9.53 x 4.10 x 2.20 cm(3.75 x 1.61 x 0.87 in)

ATEN Standard Warranty Policy

Limited Hardware Warranty

ATEN warrants its hardware in the country of purchase against flaws in materials and workmanship for a Warranty Period of two [2] years (warranty period may vary in certain regions/countries) commencing on the date of original purchase. This warranty period includes the LCD panel of ATEN LCD KVM switches. For UPS products, the device warranty is two [2] years but battery is one [1] year. Select products are warranted for an additional year (see *A+ Warranty* for further details). Cables and accessories are not covered by the Standard Warranty.

What is covered by the Limited Hardware Warranty

ATEN will provide a repair service, without charge, during the Warranty Period. If a product is defective, ATEN will, at its discretion, have the option to (1) repair said product with new or repaired components, or (2) replace the entire product with an identical product or with a similar product which fulfills the same function as the defective product. Replaced products assume the warranty of the original product for the remaining period or a period of 90 days, whichever is longer. When the products or components are replaced, the replacing articles shall become customer property and the replaced articles shall become the property of ATEN.

To learn more about our warranty policies, please visit our website:

<http://www.aten.com/global/en/legal/policies/warranty-policy/>

© Copyright 2024 ATEN® International Co., Ltd.

Released: 2024-09-12

ATEN and the ATEN logo are registered trademarks of ATEN International Co., Ltd. All rights reserved. All other brand names and trademarks are the registered property of their respective owners.